

5/11/09  
5

## Slide Mountain's East Shoulder

1657

site	P	$\Delta p$	$\Delta e$	e calc	emap	time	R
(A) Trail head	29.04	0.00		$R=0.893$	2420	9:11 AM	
(B) — Winniwook log rd.	27.94	1.10	991	3411		10:05	
(C) 3500' sign	27.84	1.20	1072	3492		10:10	
(D) 1st level spot, fir to N	27.73	1.31	1170	3590		10:13	
(E) Fir enter dom; 1st ledge	27.70	1.34	1197	3617			
(F) possible gate site?	27.62	1.42	1269	3689	No lower.	10:23	
(G) Curve in trail	27.56	1.48	1322	3742		10:25	
(H) V V- SUG flat	27.50	1.54	1375	3795			
(I) Steps Junc.	27.46	1.58	1411	3831	3780		
(J) Curtis-Omsbee Jc.	27.33	1.71	1527	3947	3960	10:37	
(K) blowdown	27.28	1.76	1572	3992		10:45	
(L) NE lookout	27.10	1.94	1732	4152		10:54	
(M) Slide Summit tower site	27.07	1.97	1760	4180	4180	10:57 11:37	
(N) Top of upper ladder	27.29	1.75	1563	3983			
(O) Spring	27.37	1.67	1491	3911		11:53	
(P) end hike	27.48	1.56	1393	3813		12:04	
(Q) Spring [Q not needed]	27.37	1.67	1491	3911			
(R) Lookout to SE	27.25	1.79	1598	4018			
(S) short terrace	27.17	1.87	1670	4090			
(M) Slide Summit tower site	<del>27.03</del> Use 27.07	1.97	1760	4180	4180	1:26	

$$4180' - 2420' = 1760'$$

$$29.04' - 27.07' = 1.97'' = 0.893 = R$$

More times:

9:30 Enter old Denning Trke.

9:36. Junc. " " " ↓ truck trail.

10:11 N-S striae on <sup>small</sup> ledge on trail

leaf-cut green line upper elev. limit at about 2500' on 5/11/09.

165-8

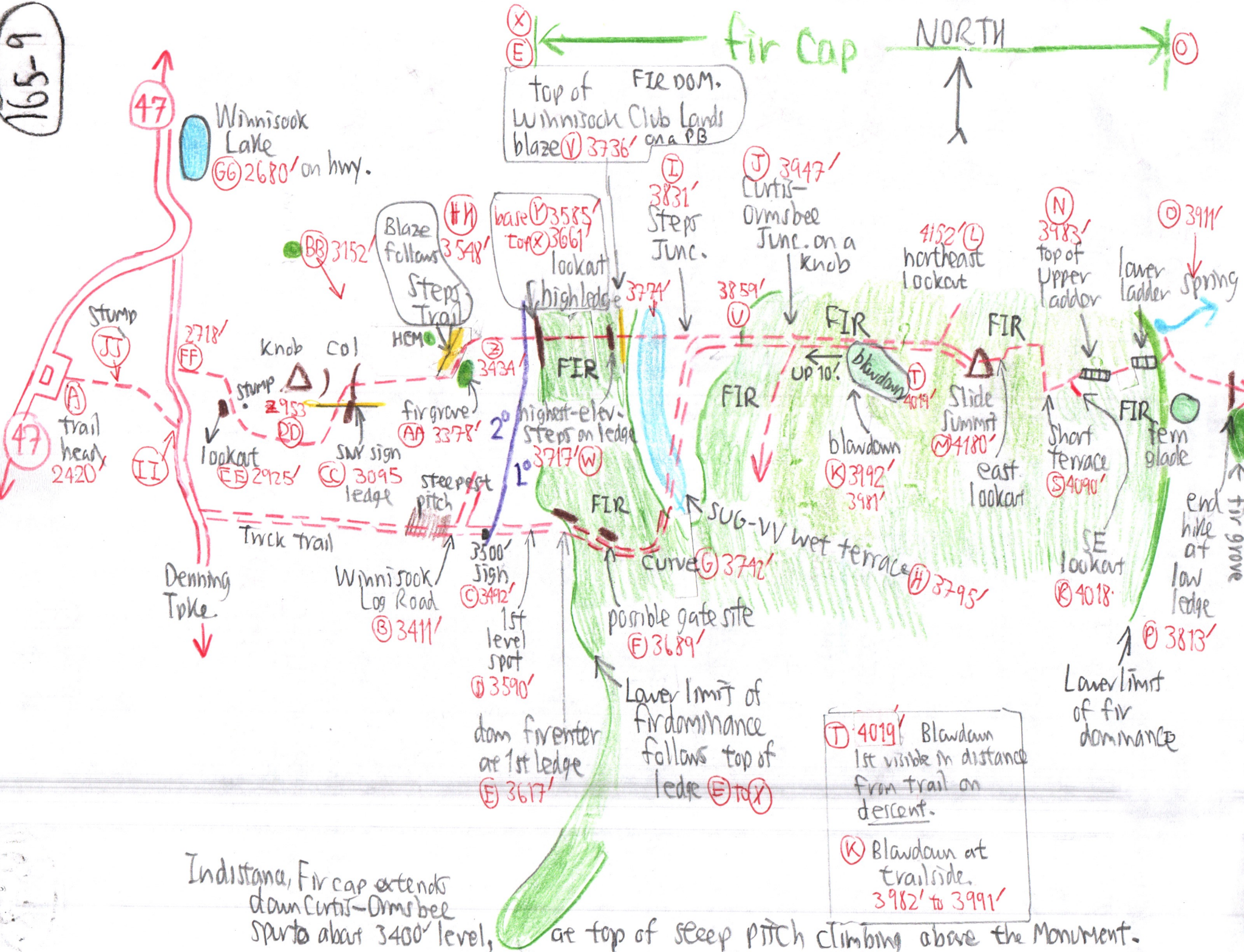
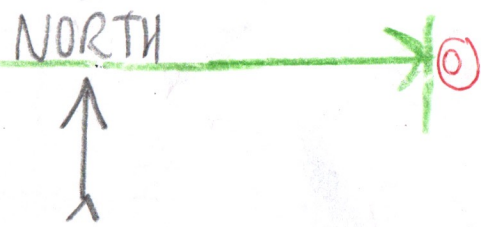
# Descent

site	P	$\Delta p$	$\Delta e$	e calc	e map	time	R
(M) Slide Summit, tower site	27.03	1.59	1500	$R_2=0.943$	4180	1:34	4180
(T) Blowdown in distance	27.20	1.42	1339	4019		2:00	2662
(K) Blowdown along trail	27.24	1.38	1301	3981			23.03
(J) Curti-Dimabee Jr.	27.29	1.33	1254	3934	3960	2:13	3960
(U) Leave fir dominance	27.37	1.25	1179	3859			
(I) Steps June.	27.43	1.19	1122	3802	3780	2:25	3780
(H) SUB-VV terrace	27.46	1.16	1094	3774			
(V) Enter Winnisook Club	27.50	1.12	1056	3736		2:30	1500'
(W) Highest steps on ledge reenter fir dom	27.52	1.10	1037	3717			1.59m
(X) Lookout ; ledge top	27.58	1.04	981	3661		2:40 to 2:55	0.943 = $R_2$
(Y) ledge base	27.66	0.96	905	3585			
(Z) Paper birch still in	27.82	0.80	754	3434			
(AA) Fir grove	27.88	0.74	698	3378			
(BB) BC scattered	28.12	0.50	472	3152			
(CC) SNK sign; trail heads sufficient (no OD)	28.18	0.44	415	3095	3140	3:24	3140
(EE) Big NEMS lookout	28.36	0.26	245	2925		3:35	2925
(FF) on Denning Tpke.	28.58	0.04	38	2718	2740	3:47	2740
(A) Trail head	28.94	-0.32	302	2378	2420	4:03	2420
(GG) Winnisook Lake	28.62	0.00	0	-	2680		2680
(HH) posted sign on dammed BC	27.70	0.92	868	3548			
(DD) SUB terrace	28.33	0.29	273	2953			

More times - Return to trail on Denning Tpke 3:48, only 1 minute from base of Steps trail.

Sign at trail head says 2.7 miles to Slide Summit

165-9



(X)  
(E) ← fir cap → (O)

top of FIR DOM.  
Winnisook Club Lands  
blaze (V) 3736' on a PB

(47) Winnisook Lake  
(GG) 2680' on hwy.

(47) trail head 2420'  
(JJ) stump  
(II)

(BB) 3152  
(FF) 2718'  
(AA) 3378' fir grove  
(DD) 2953' stump  
(CC) 3095' ledge  
(HH) 3548' blaze follows Steps Trail  
(II) 3434'

(I) 3831' Steps Junc.  
(J) 3947' Curtis-Ovmsbee Junc. on a knob  
(V) 3859'

(L) 4152' northeast lookout  
(N) 3983' top of Upper ladder  
(O) 3911' Lower ladder Spring

Denning Tpke  
Truck trail  
Winnisook Log Road  
(B) 3411'  
(C) 3500' sign  
(C) 3492'  
(E) 3590' 1st level spot  
(E) 3617' dam fire enter at 1st ledge

(W) 3717' highest-elev. Steps on ledge  
(G) 3742' curve  
(E) 3689' possible gate site  
(E) 3617' dam fire enter at 1st ledge

(K) 3992' 3981' blowdown  
(T) 4019' blowdown  
(H) 3795' wet terrace  
(S) 4090' Short terrace  
(E) 4018' SE lookout  
(B) 3813' Lower limit of fir dominance

(T) 4019' Blowdown 1st visible in distance from trail on descent.  
(K) Blowdown at trail side. 3982' to 3991'

In distance, Fir cap extends down Curtis-Ovmsbee spur to about 3400' level, at top of steep pitch climbing above the Monument.

(B) 3411'. The Winnisook log road had but cut down 3 to 5' into till with no bedrock in sight. Located at top of steepest pitch on trail. FIR only scattered. Mainly YB, B, MO & some RM. VA leafing. RM & MO lvs 1/2" to 1" partly expanded. Striae in 2 places about N-S where trail is briefly on a low ledge.

(C) 3500'. 3500' sign. Fir dom. 1st visible from trail atop ledge on spur to N.

(D) 3590'. 1st level spot on trail since Denning Tpk. Fir more common trailside, but not yet dominant.

(E) 3617'. Fir becomes abundant, but still mixed with RM-B-YB and not yet dominant. 1st high ledge trailside. Slope abruptly steepens. Trail in shade now. More striae.

(G) 3742'. Trail's 1st wet spot since Denning Tpk at entrance to the VV-SUB seep terrace.

(H) 3795'. Mid VV-SUB terrace with Beech. Fir only scattered here, but dom-both below & above the terrace.

(I) 3831'. 1st PB noted but prob. more below. Small RA thicket. Conglomerate more common in ledge & in till.

(U) 3859'. Reenter fir dominance. Between (I) & (U), the forest is mixed & open, a continuation of

the hardwood-dominated terrace (H), but drier.

165-10

(K) 3981 to 3992'. Lower limit of Blawden 1st trailside. At (T) 4019', blawden upper limit is off the trail, but visible, perhaps 200 ft distant (see p 165-11 for detail).

This must have been the area in 1970s where a few spur trails led to south lookouts. Spur trails are all gone. It seems that there is less birch here now than in 1970s photos.

(M) 4180'. Crows 20' to 30', not especially dwarfed.

(N) 3983'. Half FIR, half PB.

(O) 3911'. Spring. Base of lower ladder is barely 20 ft in elev. above the spring. Fir dominance above on multiple ledges, averaging about 45° in slope, yields below to a semi-open area ground & beneath the spring.

Ledges are fewer, lower, more distant. Slope 20° to 30°. Soil has more water, till deeper. Thalic & V V extends <sup>South</sup> on contour from the spring across trail into a Scamyl. mosaic.

\* MM is dominant also at seep on W shoulder of Plateau above Stoney Clave.

(P) 3911 to 3813: \* MM dom. Shrub thicket is around the spring & to the north only: CMC with black knot, MM, VA, RA, scattered FIR. Mixed in are stunted YB & PB & SORB, only 10' to 20' high.

Ground cover is VV, \$int & \$campyl, ERY, TU, LL, CB, TE, CLAYT, RB, TRALIETUM B & MO at (P) 3813 N side of trail, fir grove on S side.

Trail ended 12" to 14" into till with a few quartz pebbles. Till red-brown, not white. End-hike ledge has 24" of till exposed. Both \$ spp. present.

The "wall of fir" is clearly visible above as a fir cap. Tiller at spring is >24".

Open fern Campyloptera glade S of trail has scattered trees: PB & FIR to 30', deformed. Forest resembles Eagle, Balsam, & Big Indian Mts. (which have lost their fir caps) = fir grove & scattered fir (Good place for a nap!). Fir dominance stands have broken up & reached this discontinuous stage.

\$campyl. fronds unfurling & 1" high in prolific CLAYT & ERY flowers. SM & AA emerging.

See p. for notes on \$campyloptera glades on Balsam Mtn, and on Mill Brook Ridge & DBR.

165-11

(P) 4090' The short terraces have 1 to 2' of till in pockets. Trail level here & oriented N-S. White gravel on trail from here up to summit holds Cortis? (MK notes illegible) nil water.

(T) to (K) 4019 to 3981': BLOWDOWN  
1st view of blowdown is at (T), about 200 ft or so off trail. In the blowdown, about 1/2 the mature trees <sup>standing</sup> are live. The other 1/2, dead, are mostly decapitated as if broken by ice. Repr. 5 to 10 y old. Blowdown must have occurred about 1998 or 1999. Repr. at trail side 6 to 10 y old, growing 6" to 9" in height/year. The standing forest between the blowdown & the trail is about 99% fir, with very few PB.

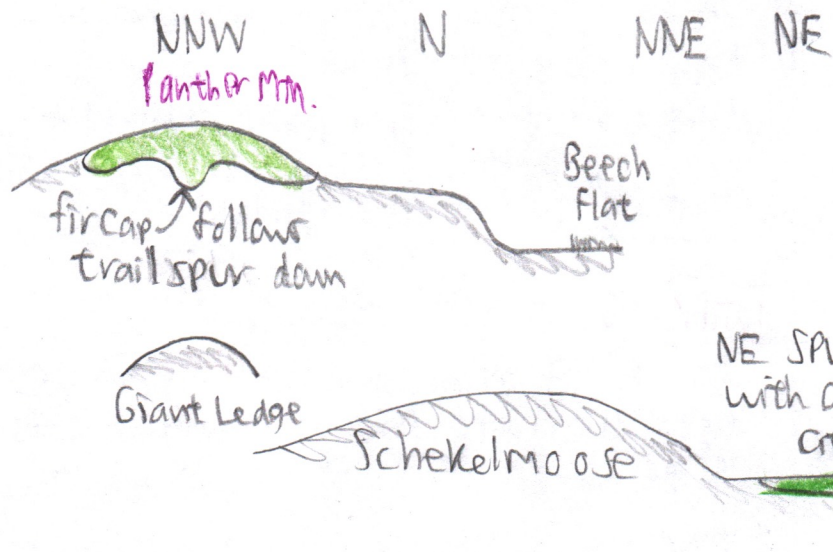
(U) 3859'. On descent, the fir dom-cap is left behind here in a semi-open, scattered fir forest with YB dom. Some PB, VA, MO, RA, SORB, then B & PIN. One VV. No abrupt change in topo. here - no high ledge above.

(X) 3661'. High ledge lookout. FIR dom above with 1 to 2' of till. Cong layers in ledge. 1st black firs of the day (morning was cold). Below ledge at (P) 3585' is YB dom, a few PB & scat-fir, RM in flower.

VIEW: DBR lines up over Big Indian - Eagle Col. Mt. Disgah " " " Eagle - Haynes Col.

Stumps begin on VV flat under high ledge at (P) 3585' (over ->)

View from Slide Mtn:



Viewed from the spring (165-12) the Escarpment from Balsam Cap to Wittenberg could have served as a spruce "expressway" for migration north & missed Slide Mtn. Did spruce migrate by Panther Mtn. also in spotty, scattered fashion?

(Y) continued. 2 ft of till on a cake, but no ledge visible. Wet spot on trail. Till brown, with a few pebbly quartz. 3' till at another site. B-YB-RM-VV.

(HH) 3548' Another Winnie sock sign on a downed BC. ERY + CLAY in flower, MC, LL.

(Z) 3434' of till. PB still in, few. Trail descends a succession of low ledges

(AA) 3378' Trail turns W to SW by a fir grove. One NEM to N. Follows blaze line. More stumps. SORB seedlings. TU in fl. Very few fir below. \*Near-recal elev.?

(BB) 3152' Scattered BC. Trail turns SW off of crest in a shallow col. Knob to NW.

(CC) 3095' Trail turns S crossing into SNY. Steep descent. Highest SUBs, 2 at 6" dbh. Curtis-Orrybe col is straight ahead.

(DD) 2953'. A few SUB on a NEM terrace. BC cake 2' thick, no ledge visible. Trail climbs gently toward (EE). Stump on the terrace below ledges to E.

(EE) 2925'. Big NEMLOCK lookout down the West Branch. Good view of Wildcat Mtn. Trees beginning to leaf out.

Taxus (no elevation recorded) = between (FF) + (HFF)

(FF) 2740' ILLC Denning Road. Seeps. Another Taxus.

ASH + SUB at trail jc. (II)

(JJ) Stump near top of gentle slope 3-55